

**Jerusalem Children & Community
Development Organization
(JeCCDO)**



**Strategic Management Plan
2022-2027**

(Abridged Version)

Jerusalem Children and Community Development Organization (JeCCDO) is a board led local civil society organization with the overall organizational objective of creating sustainable development on the lives of vulnerable communities in Ethiopia through integrated social, economic, capacity development, lobby, advocacy, humanitarian support and social business interventions.

This is the Strategic Management Plan (2022 -2027) of JeCCDO which provides a renewed strategic focus over the next SIX years; providing a basic framework to enable JeCCDO to cope with emerging changes more creatively, inform all within the organization and partners about the vision and mission, values and strategic direction and provides stability for its operations.



OUR VISION

“To see resilient communities that ensures sustainable changes in the lives of children and youth.”



OUR MISSION

“To empower communities that realizes the rights and opportunities of children and youth to reach their full potentials”



OUR CORE VALUES

Integrity

We act with honesty and honor without compromising the truth.

Accountability

We acknowledge and assume responsibility for actions, services, decisions, and policies at individual and institutional level.

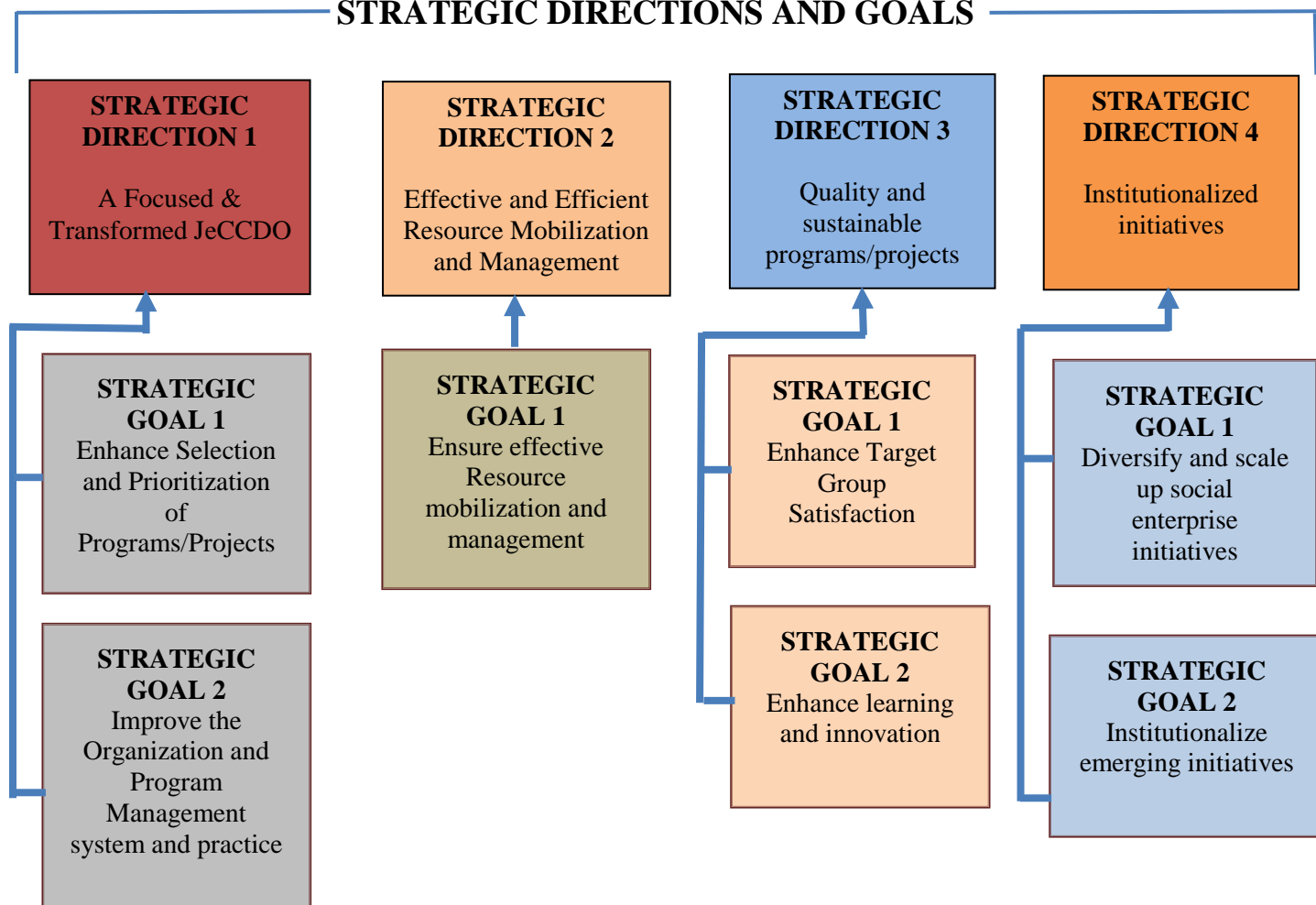
Entrepreneurial thinking

We encourage new ideas and innovations to promote entrepreneurial thinking for self-sufficiency.

Inclusiveness

We are committed to contribute for a just and equitable society through creating a shared environment where everyone has equal opportunity.

STRATEGIC DIRECTIONS AND GOALS



PROGRAM FRAMEWORK

The program focus of JeCCDO in the coming six years will be on the selection and implementation of few and sustainable interventions. JeCCDO will be founded on the following **FOUR** program frameworks and targets.



Children and Youth Development



Capacity Development and Social Protections



Social Innovation



Humanitarian Responses

1

Children and Youth Development: JeCCDO focuses on programs that promote change and growth of children and youth to meet their livelihoods, wellbeing and healthy development.

2

Social Innovation: JeCCDO will value more on innovation and entrepreneurship (social enterprise at CBO and JeCCDO level as well as individual business enterprises) in seeking new ways to respond to the social and economic challenges of vulnerable communities in sustainable manner.

3

Capacity Development and Social Protections: Enabling people, organizations, and systems to innovate and respond to needs and challenges is the other thematic focus area of JeCCDO programs and projects. In this case the capacities of community based organizations, partner government and civil society organizations and issues of social accountability and protection will be addressed and enhanced.

4

Humanitarian Responses: With the growing challenge of ongoing conflicts in the country, the growing climate crisis and the COVID-19 pandemic humanitarian needs are rising from time to time. JeCCDO takes a comprehensive approach to engage in emergency response including preparedness, immediate assistance and long-term recovery of the communities to be affected.

Program Targets

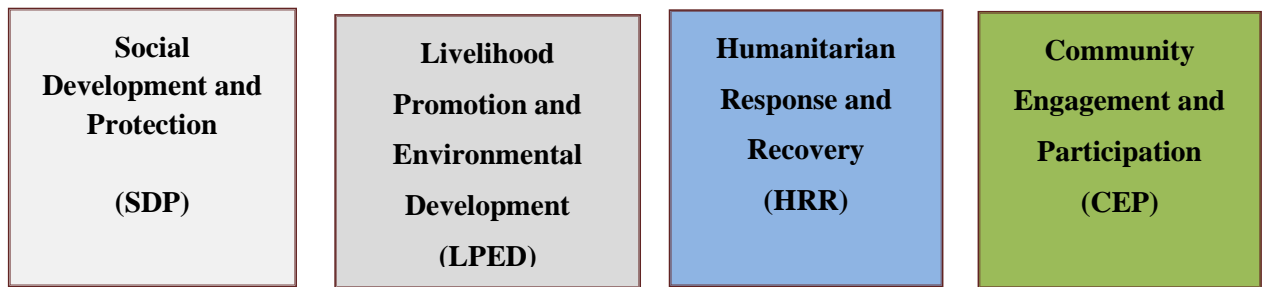


CHILDREN



YOUTH

PROGRAM COMPONENTS



1. Social Development and Protection (SDP)

This program is designed to address major social problems of vulnerable community groups (children and youth) through integrated and community based support and development. This program is designed to improve the well-being of targeted vulnerable community groups (children, youth, and women) through integrated support and development.

Program Goal

To ensure the well-being and protection of children and youth.

Major program sub components:

1. **Education**
 - 1.1. Early Childhood Education and Development
 - 1.2. Primary School Capacity Building
 - 1.3. School Girls' Empowerment
2. **Care and Support**
 - 2.1. Community Based OVC Care, Support and Community Empowerment
3. **Rehabilitation and Reintegration**
 - 3.1. Commercial Sex Workers Rehabilitation & Reintegration
4. **Health**
 - 4.1. Sexual Reproductive Health Rights Promotion
 - 4.2. Water Sanitation and Hygiene (WASH)
 - 4.3. HIV/AIDS Prevention and Impact Mitigation
5. **Child Safeguarding**
6. **Grants Management and Capacity Development of CBOs**

2. Livelihood Promotion and Environmental Development (LPED)

The program is aimed at enhancing the economic status of vulnerable community members by engaging them in sustainable livelihoods and addressing environmental development issues.

This program has two **goals**:

- 1. To enhance the socio-economic status of targets.**
- 2. To increase knowledge and practice of communities in environmental development.**

Major program sub components:

- 2.1. Youth Empowerment
- 2.2. Women Economic Empowerment and Self Help Group Promotion
- 2.3. Food Security and Nutrition Promotion
- 2.4. Environmental Development
- 2.5. Productive Safety Net (PSN)

3. Humanitarian Response and Recovery (HRR)

This program focuses on humanitarian crises preparedness, response, recovery and rehabilitation.

The **Goal** of this program is:

To address the basic humanitarian and development needs of communities under emergencies.

Major program sub components:

1. Emergency Preparedness and Response
2. Recovery and Rehabilitation

4. Community Engagement and Participation (CEP)

This program is designed to educate and increase the awareness of target communities and empower them to engage in social business schemes, claim their social and economic rights and ensure peace and democracy for sustainable community development.

The **Goal** of this program is:

To strengthen community engagement in local development, peace building and influencing changes of government policies and practices.

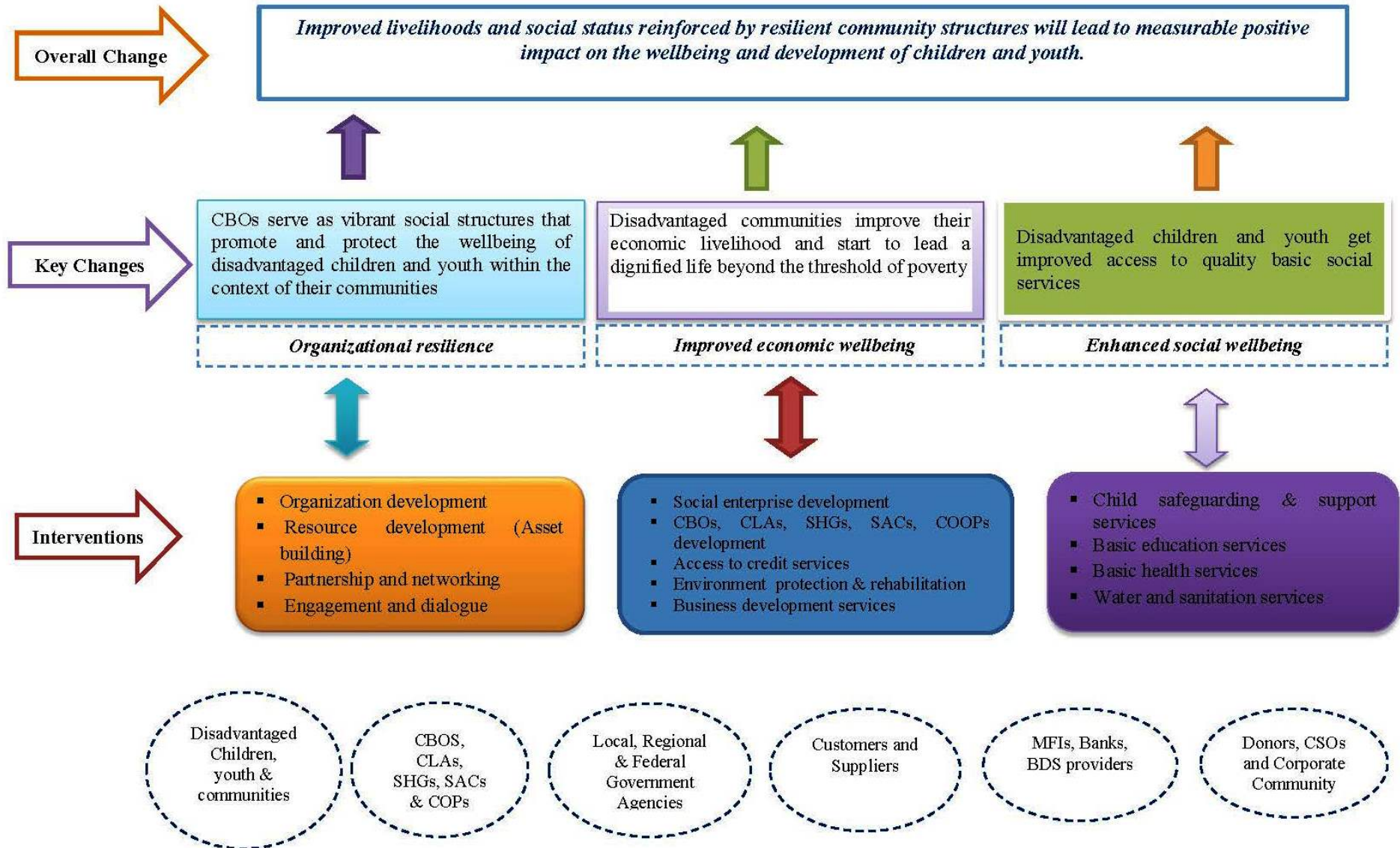
The major program sub components are:

- 4.1. Social Accountability Promotion
- 4.2. Peace and Democratic Governance Promotion
- 4.3. Social Enterprise Development and Promotion

Geographic Focus

Urban and Semi Urban towns within 150 km radius of the current Four Area Community Development Program Office (ACDPO).

Theory of Change





⇒ **Head Office: Jerusalem Children and Community Development Organization (JeCCDO)**

PO Box 41742, Addis Ababa, Ethiopia.

Tel: +251-11 667 54 00

Email: jeccdogmail.com

Website: jeccdoethiopia.org

⇒ **Area Community Development Program Offices (ACDPO)**

Bahir Dar: P. O. Box 337 – Bahir Dar – Ethiopia:

Tel. +251- 058-218 22 21/22, E-mail: jeccdobd@gmail.com

Bishoftu: P. O. Box 45 – Bishoftu – Ethiopia:

Tel. +251-011-433 85 89, Fax-+251-11-4331020,

E-mail: jeccdodz@ethionet.et

Debre Birhan: P. O. Box 77 – Debre Birhan – Ethiopia:

Tel. +251-011-681 13 13, Fax-+251-11-6812172,

E-mail: jeccdodb@gmail.com

Hawassa: P. O. Box 1346 – Hawassa – Ethiopia:

Tel. +251-046-21 00 05/07, Fax-+251-46-2210007,

E-mail: jeccdohw@gmail.com